



MANHOLES - ROUND

MODEL

Top-Entry Round Atmospheric Manhole with Sealing Gasket

PRINCIPLE

This top-entry manhole allows individuals to enter a tank. It is designed as an atmospheric application with hygienic sealing gaskets. A single swing handle makes entry easy and accessible.

APPLICATION

The atmospheric manhole is mounted on the top dome or cone of stainless steel tanks. The single swing handle is mounted to a bridge that straddles the manhole lid. The handle's padlock facility protects against unauthorised access. Each manhole is installed with a gasket that is specially designed to fit over the neck. Gaskets are supplied in various materials – selected for specific purposes.

FEATURES

- Top-entry
- Grade 304L and 316L stainless steel
- Single swing handle
- Padlock facility
- Specially fitted sealing gasket
- Gasket material variations: Food-Quality Rubber, EPDM, Silicon, Viton
- Neck height and diameter variations
- Full range of spares available

OPTIONS

Available in grade 304L and 316L stainless steel.
Two neck diameter options: 430mm and 500mm.

The 430mm diameter neck is available in two neck heights:

1. 100mm
2. 150mm

The 500mm diameter neck is available as a single neck height:

1. 200mm

The gaskets are available in the following materials:

1. Food-Quality Rubber (ex-stock)
2. EPDM (ex-stock)
3. Silicone (special request)
4. Viton (special request)

We also stock two smaller hand-holes, available in 215mm and 296mm diameters.



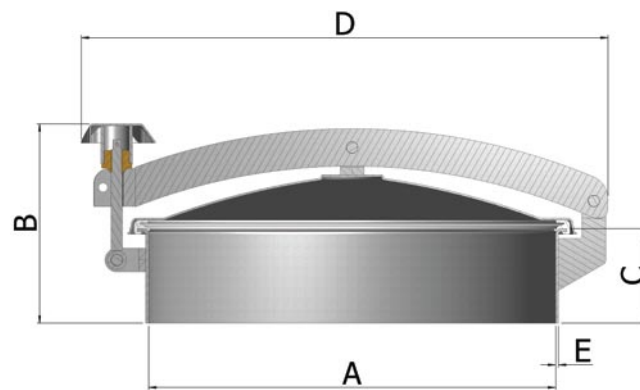


MANHOLES - ROUND



SPECIFICATIONS

- The Food-Quality Rubber gasket is rated to a temperature of 70 degrees C
- The EPDM gasket is rated to a temperature of 110 degrees C
- The Silicone gasket is rated to a temperature of 180 degrees C
- The Viton is gasket is rated to a temperature of 250 degrees C



DIMENSIONS

MODEL	A	B	C	D	E	MWP	MWV	WEIGHT
511-1-100	430	201	100	558	3	3kPa	10kPa	10kg
511-1-150	430	257	150	558	3	3kPa	10kPa	11.6kg
511-3-200	500	296	189	628	3	2kPa	8kPa	16kg

MWP = Maximum Working Pressure
 MWV = Maximum Working Vacuum
 All measurements in millimeters (mm)

Contact us on +27 11 674 1300/3 for more information.

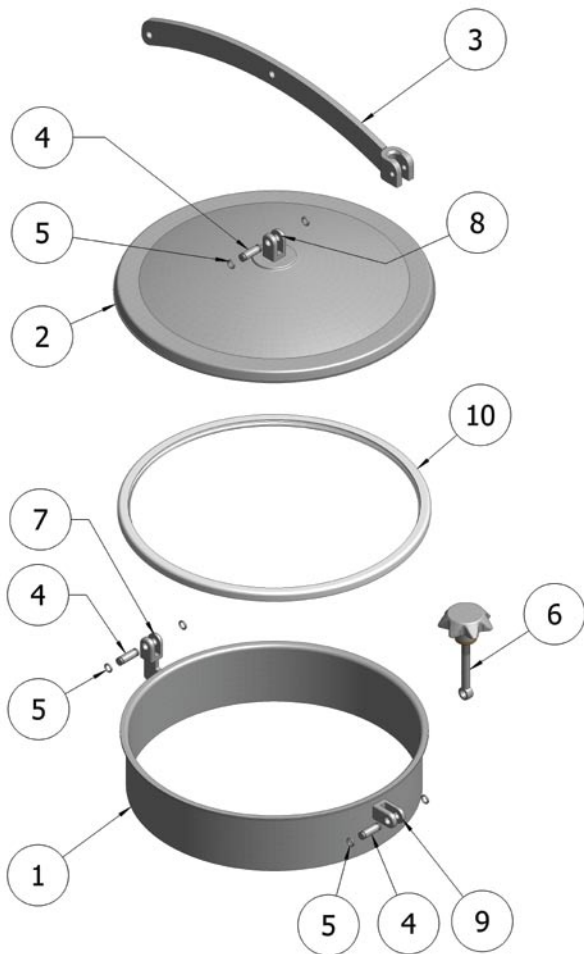
The information contained in this brochure is for guidance only. BMC Engineering reserves the right to modify any material or feature without advance notice. For further information please consult our web site.

www.bmceng.co.za

 **BMC Engineering**



MANHOLES - ROUND



PARTS

ITEM NUMBER	DESCRIPTION	QUANTITY PER MANHOLE
1	Neck	1
2	Lid	1
3	Bridge With Back U-Bolt	1
4	Hinge Pin	3
5	Hinge Pin Retainer	6
6	Swing Handle	1
7	Bridge Hinge	1
8	Lid Hinge	1
9	Swing Handle Hinge	1
10	Gasket	1

Please use the part numbers for spares identification.

Contact us on +27 11 674 1300/3 for more information.

The information contained in this brochure is for guidance only. BMC Engineering reserves the right to modify any material or feature without advance notice. For further information please consult our web site.

www.bmceng.co.za

