



BMC Engineering

MANHOLES - OVAL

MODEL

Side-Entry Oval Atmospheric Manhole with Sealing Gasket

PRINCIPLE

This side-entry manhole allows individuals to enter a tank. It is designed as an atmospheric application with hygienic sealing gaskets.

APPLICATION

The atmospheric manhole is mounted on the side of stainless steel tanks. The single handle is mounted to a cross bridge that straddles the manhole neck. The manhole lid opens to the inside of the tank. Each manhole is installed with a gasket that is designed to fit the lid. Gaskets are supplied in various materials – selected for specific purposes.

FEATURES

- Side-entry
- Inward opening lid
- Grade 304L and 316L stainless steel
- Single fastening handle
- Specially fitted sealing gasket
- Gasket material variations: Food-Quality Rubber, EPDM, Silicon, Viton
- Neck height variations
- Full range of spares available

OPTIONS

Available in grade 304L and 316L stainless steel.

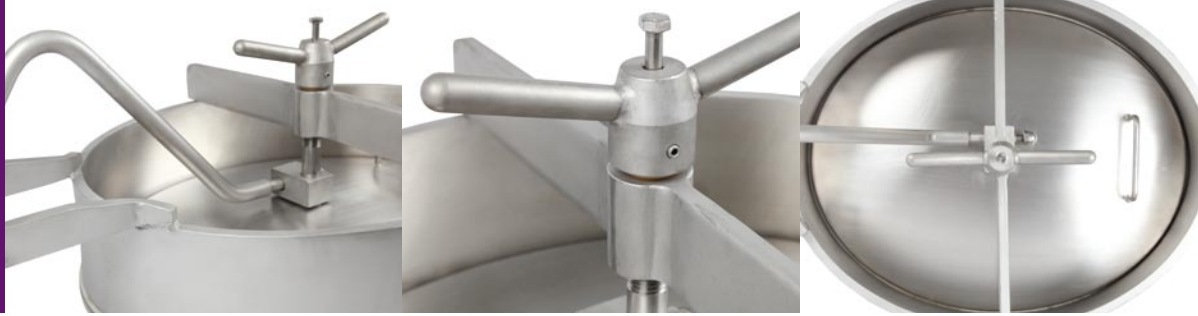
The gaskets are available in the following materials:

1. Food-Quality Rubber (ex-stock)
2. EPDM (ex-stock)
3. Silicone (special request)
4. Viton (special request)

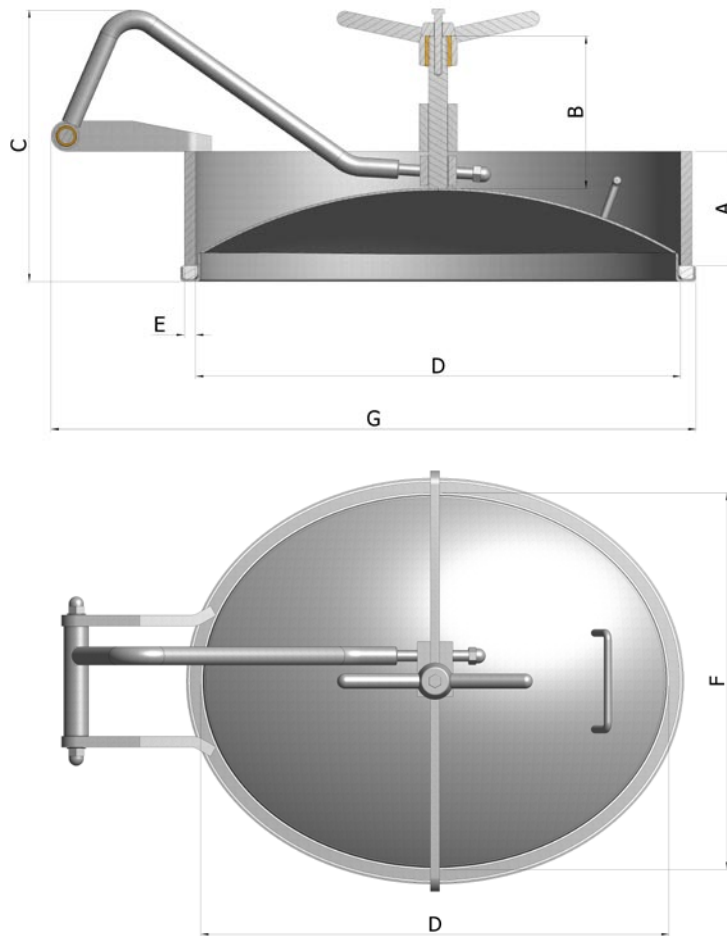
SPECIFICATIONS

- The Food-Quality Rubber gasket is rated to a temperature of 70 degrees C
- The EPDM gasket is rated to a temperature of 110 degrees C
- The Silicone gasket is rated to a temperature of 180 degrees C
- The Viton is gasket is rated to a temperature of 250 degrees C





MANHOLES - OVAL



DIMENSIONS

MODEL	A	B	C	D	E	F	G	MWP	MWV	WEIGHT
511-5-120	120	160	293	510	12	410	669	200kPa	5kPa	29kg
511-5-150	150	190	323	510	12	410	669	200kPa	5kPa	35kg

MWP = Maximum Working Pressure
 MWV = Maximum Working Vacuum
 All measurements in millimeters (mm)

Contact us on +27 11 674 1300/3 for more information.

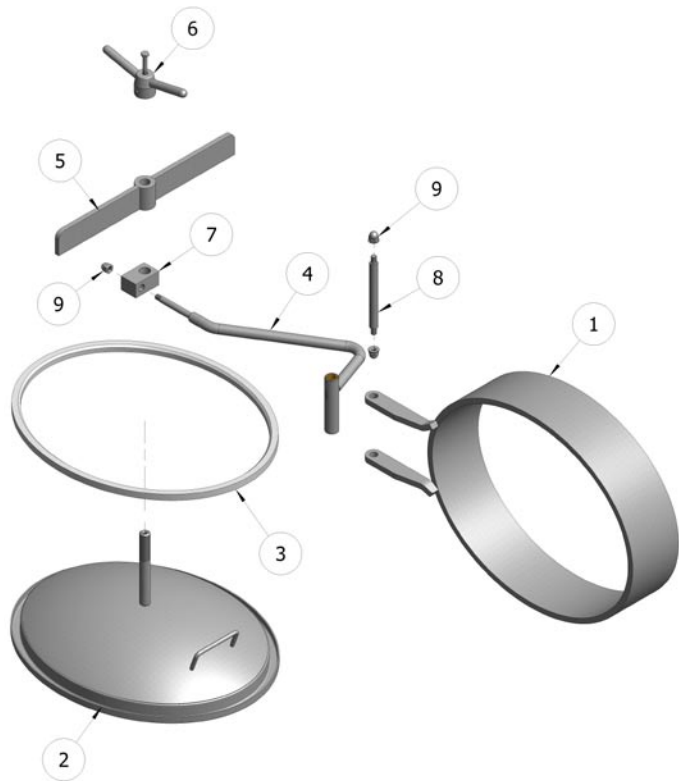
The information contained in this brochure is for guidance only. BMC Engineering reserves the right to modify any material or feature without advance notice. For further information please consult our web site.

www.bmceng.co.za

 **BMC Engineering**



MANHOLES - OVAL



PARTS

ITEM NUMBER	DESCRIPTION	QUANTITY PER MANHOLE
1	Neck with Back Hinge Plates	1
2	Lid with Handle and Bolt	1
3	Gasket	1
4	Goose Neck with Hinge Bush	1
5	Cross Bar with Center Bush	1
6	Handle	1
7	Gooseneck Block	1
8	Hinge Pin	1
9	Cap Nut	3

Please use the part numbers for spares identification.

Contact us on +27 11 674 1300/3 for more information.

The information contained in this brochure is for guidance only. BMC Engineering reserves the right to modify any material or feature without advance notice. For further information please consult our web site.

www.bmceng.co.za

 **BMC Engineering**